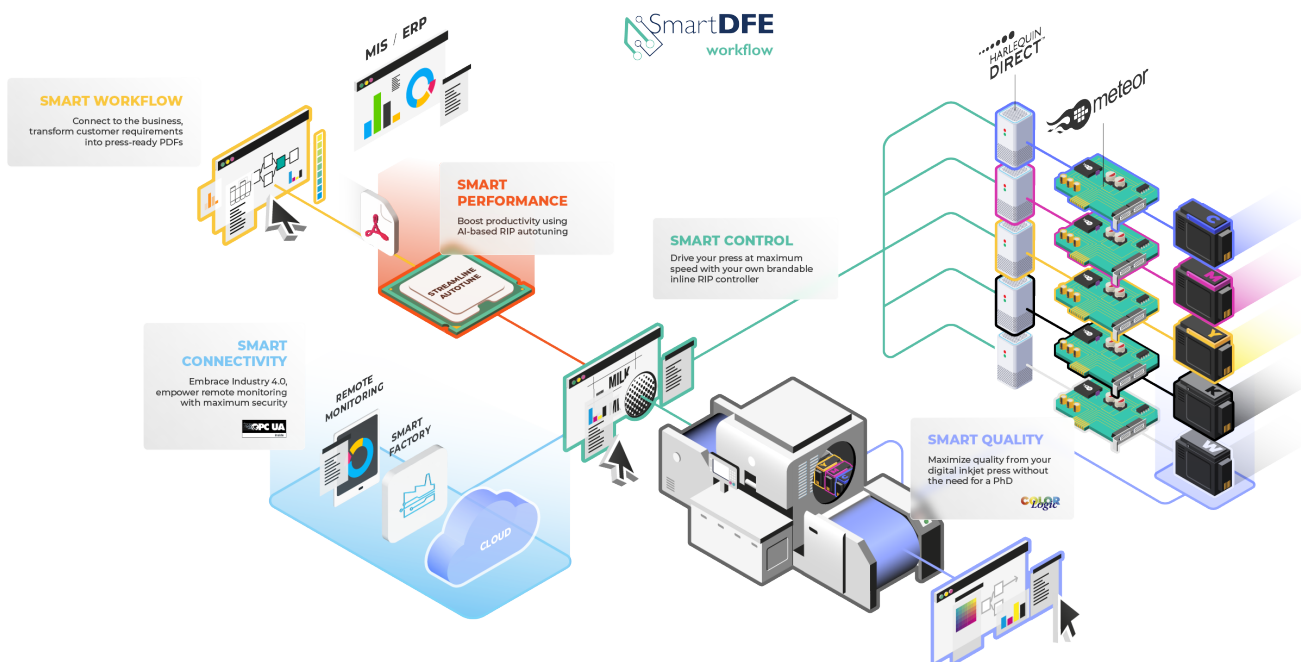


# SmartDFE workflow

SmartDFE Workflow™ for Labels and Packaging is an award-winning collection of innovative and market-proven components that enable your engineering team to get to market quickly whilst giving them the space and capability to add their own value. SmartDFE is a full software stack for high-speed, single-pass, label and packaging inkjet presses. It includes everything from job creation and pre-press workflow through to printhead drive electronics.



## SmartDFE Workflow Components

SmartDFE Workflow Components	SmartDFE workflow	SmartDFE server
Smart Control™ (including Harlequin Direct™)	●	●
Smart Quality™	●	●
ColorLogic Inside	●	●
PrintFlat™	◐	◐
Smart Connectivity™	●	●
Smart Performance™	●	●
SmartQI™	●	●
Meteor Ready	●	●
Smart Job Cost Estimator™	●	●
CoPrA™ and ColorAnt™	▲	▲
STEPZ®	▲	▲
Smart Workflow™	●	

● Included as standard

◐ Included with all variants apart from "Static"

▲ Optional purchase

## Features and benefits

### Smart Workflow and Prepress Tools

#### Smart Job Cost Estimator

- Equip your customer's sales team with the most accurate job estimation software

#### STEPZ® (Optional)

- All-in-one solution for prepress and VDP – based on PDF
- Designed for Labels & Packaging
- Full, brandable front end
- Optimized PDF creation for on-the-fly printing at full speed
- Define templates for dynamic document design
- Export die cut for toolmaking

#### Smart Workflow

- Connect to the business, transform customer requirements into press-ready PDFs
- Advanced label and packaging workflow built using HYBRID Software's CLOUDFLOW®
- Designed for Labels & Packaging
- Support for Management Information Systems (MIS)
- Advanced workflow designer
- Variable data expansion
- Multiple printer control
- Cloud front end

#### Smart Control

- Drive your press at maximum speed with your own brandable inline RIP controller
- Press Operator's controller
- Full, brandable front end
- Harlequin Direct at Heart: designed to drive the fastest, widest and highest resolution inkjet devices
- Full variable data streamed directly to the device electronics
- Instant printing, no need to RIP ahead
- Easily scalable with extended gamut and special colors

### Smart Performance

- Boost productivity using AI-based RIP tuning
- Patented Streamline Estimate™ technology estimates achievable line speed before committing to run a job, saving waste
- Simple traffic light system lets the operator know the job can be run at press speed
- Patented Streamline Autotune™ technology optimizes and intelligently configures the system for each job, achieving maximum levels of productivity
- Convert formats to streamlined PDF including (eg IJPDS and PPML)

### Smart Connectivity

- Integrate into your own front end and connect to Industry 4.0 (OPC UA)
- Create or integrate using most development languages
- Integrate into the wider factory and SCADA systems
- Collect securely to the Cloud and remote monitoring systems

### Smart Quality

- Enable your customer's press operators to achieve the best quality without the need for a print PhD
- Create a library of predefined media definitions describing all the settings needed for perfect color and quality
- Supercharged by ScreenPro™ with advanced inkjet-specific screens and custom screen design service
- Powered by the award-winning PrintFlat™ technology, taking inkjet quality to the next level
- Enhanced with industry-leading color tools with ColorLogic Inside

### SmartQI

- Stream data directly to industry-standard inline quality inspection systems
- Areas of interest highlighted (eg variable data)

- Generates color-managed RGB raster data for every page

### Four Variants

- **Static:** A single PC running all the software and generating a static raster which will be printed many times
- **Standard Data Rate (SDR):** (Up to 3GB/s) Designed for less demanding variable data, lower resolution, narrower and lower speed presses
- **High Data Rate (HDR):** (Between 3GB/s and 18 GB/s) Designed for most common variable data and mainstream press capabilities
- **Ultra-High Data Rate (UHDR):** (Above 18 GB/s) Designed to produce the huge amounts of data generated by fully variable data on the fastest, highest resolution, widest and best quality inkjet printing presses

### BreakThrough Service

- Add our engineers to your engineering team to get you shipping sooner
- Break through any barrier slowing your route to market
- Buy a block of days which is 100% recoverable against licenses as soon as you ship, making the service effectively free.

### Licensing and localization

- SmartDFE licenses against a single printing device using the OEM's own security and licensing system. SmartDFE has been built to be easily localized by the OEM. Any enablement of Pantone® Color Data and/or Color Data Libraries within the Licensee's OEM products shall only be permitted for Licensees who have entered into separate and distinct Pantone License Agreements directly with Pantone LLC.



Sign up to evaluate  
[info@globalgraphics.com](mailto:info@globalgraphics.com)

[www.globalgraphics.com](http://www.globalgraphics.com)

#### Global Graphics Software Inc.

6601 S Tamiami Trail,  
 Suite 176  
 Sarasota, FL 34231  
 United States of America  
 Tel: +1 (941)925-1303

#### Global Graphics Software Ltd

Building 2030  
 Cambourne Business Park  
 Cambourne, Cambridge  
 CB23 6DW UK  
 Tel: +44 (0)1954 283100

#### Global Graphics KK

613 AIOS Nagatacho Bldg.  
 2-17-17 Nagatacho, Chiyoda-ku,  
 Tokyo 100-0014  
 Japan  
 Tel: +81-3-6273-3740